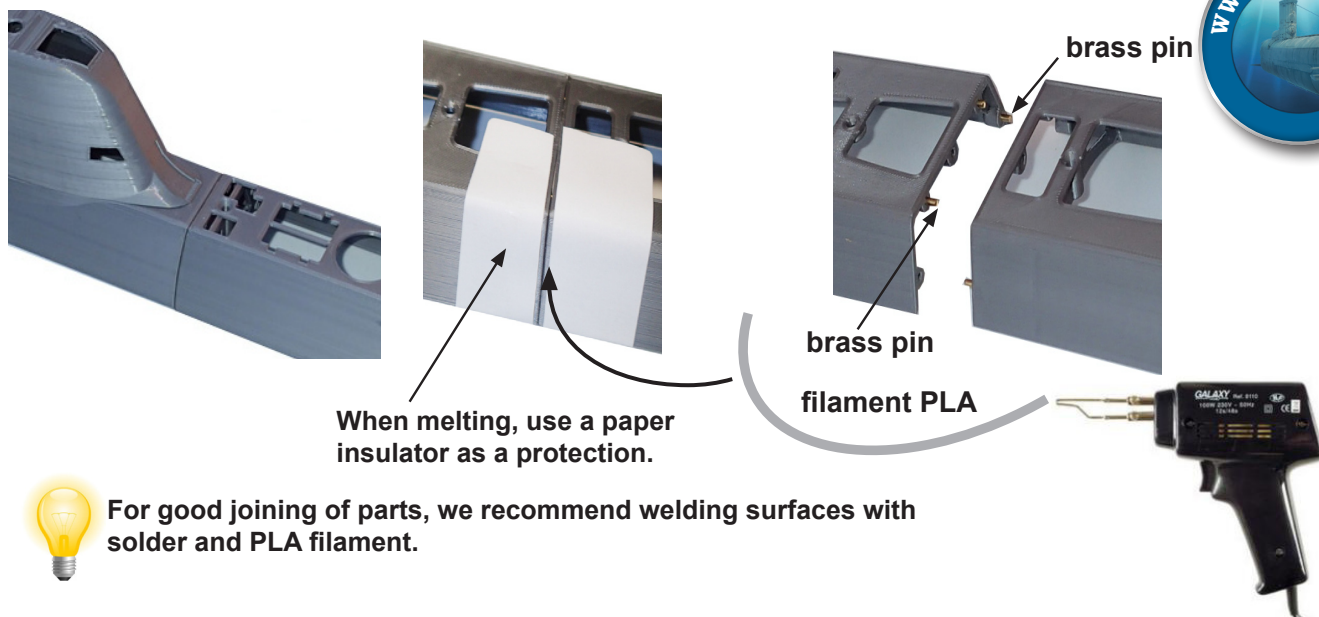


SKU-0204

# Products with 3D printing



## example



We recommend using a filler (BodyFill 360) that covers the print lines on the product. You can then sand the surface with sandpaper for a smooth surface. If the product is designed for a functional model in water, all surfaces of the product must be colored by the filler.

original surface

surface after use of the filler  
BodyFill360

finish



### Do not expose to direct sunlight.

The printing material is PLA. This is the same material as the RC models of aircraft. yet it is not recommended to leave it in the sun.

